

PRESSURE REGULATOR FOR WATER, WITH FLANGE

RWF

Description Regulator independent of inlet pressure, made of gunmetal, with strainer of stainless steel. Regulators up to 10 bar outlet pressure equipped with diaphragm, all others are piston-operated.

Drinking water particularly all regulators RWF-..C with pressure range 1.5 ...6 bar.

Media preferably water or drinking water, but also compressed air, neutral liquids and non-corrosive gases. It has to be considered that these regulators are non-relieving.

Pressure difference 1 bar, between inlet and outlet pressure

Gauge port G $\frac{1}{4}$ on both sides of the body for outlet pressure, ports are closed with screw plugs.

Mounting position any, preferably vertical

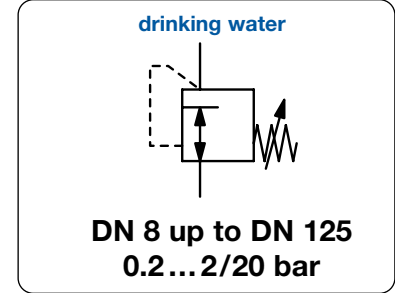
ATEX according to ATEX2014/34/EU, EN1127, EN13463 for zone 1, 2, 21 and 22

PED according to EU directives DGRL/PED for liquids and gases of group 2

Flanges according to DIN 1092. length according to DIN558-1

Temperature range 0 °C to 80 °C / 32 °F to 176 °F

Material see opposite page



Dimensions				Flow rate	K _{vs} -	Nominal	Pressure		Order
A	B	C	D	recommended	value	size	inlet	outlet	number
mm	mm	mm	mm	(m ³ /h)*1	(m ³ /h)	DN	max. bar	bar	

Pressure regulator with flange

gunmetal, NBR/Buna N, w/o gauge
drinking water: RWF-..C

RWF

130	178	48	80	0.2	0.5	DN 8	25	0.8 ... 8	RWF-02D
							40	1.5 ... 20	RWF-02G
				0.2	0.5	DN 10	25	0.8 ... 8	RWF-03D
							40	1.5 ... 20	RWF-03G
130	175	48	95	1.3	2.9	DN 15	16	0.2 ... 2	RWF-04A
							25	0.5 ... 4	RWF-04B
								1.5 ... 6	RWF-04C
								1.5 ... 10	RWF-04E
								1.5 ... 12	RWF-04F
								2.0 ... 20	RWF-04G
150	183	53	105	2.3	3.9	DN 20	16	0.2 ... 2	RWF-06A
							25	0.5 ... 4	RWF-06B
								1.5 ... 6	RWF-06C
								1.5 ... 10	RWF-06E
								1.5 ... 12	RWF-06F
								2.0 ... 20	RWF-06G
160	185	58	115	3.6	5.4	DN 25	16	0.2 ... 2	RWF-08A
							25	0.5 ... 4	RWF-08B
								1.5 ... 6	RWF-08C
								1.5 ... 10	RWF-08E
								1.5 ... 12	RWF-08F
								2.0 ... 20	RWF-08G
180	197	70	140	5.8	6.1	DN 32	16	0.2 ... 2	RWF-10A
							25	0.5 ... 4	RWF-10B
								1.5 ... 6	RWF-10C
								1.5 ... 10	RWF-10E
								1.5 ... 12	RWF-10F
								2.0 ... 20	RWF-10G
200	386	75	150	9.0	9.0	DN 40	16	0.2 ... 2	RWF-12A
							25	0.5 ... 4	RWF-12B
								1.5 ... 6	RWF-12C
								1.5 ... 10	RWF-12E
								1.5 ... 12	RWF-12F
								2.0 ... 20	RWF-12G



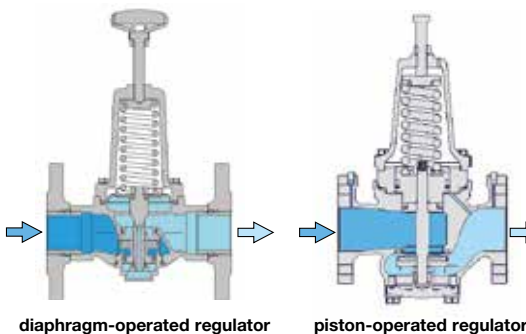
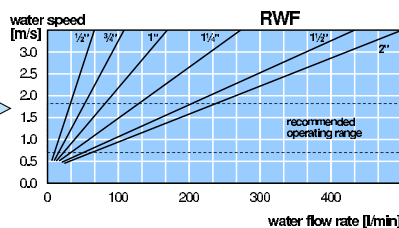
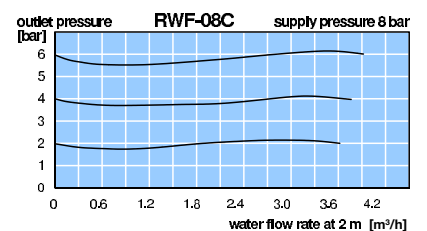
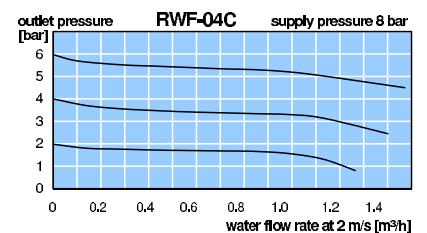
RWF-02...08D/G



RWF-...10...16G



RWF-24A
accessories: pressure gauge



*1 at 2 m/s water speed * for compressed air the flow is 70 times greater

PDF CAD
www.aircom.net



Order example:
RWF-02D

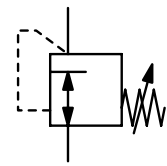
PRESSURE REGULATOR FOR WATER, WITH FLANGE

RWF

Regulator Nominal size	RW DN	Material						
		RWF-..A DN 8-10	RWF-..B DN 15-80	RWF-..C DN 15-125	RWF-..D DN 15-125	RWF-..E DN 15-125	RWF-..F DN 15-100	RWF-..G DN 8-80
Body	all	gunmetal CnSn5Zn5Pb2-C-GS / CC499K (Rg5)						
Spring cage	< DN 32 > DN 40	Ms (< DN 25) -	PA Rg	Ms	PA	Ms	Ms (< DN 25) GG (> DN 32)	
Seals	all	NBR/Buna-N						
Diaphragm	< DN 25 > DN 32	CR	NBR/Buna-N				piston / NBR/Buna-N piston / NBR/Buna-N	
Inner valve	< DN 32 > DN 40	Ms	Ms, SS, Ho		Ms, SS, Ho (< DN 25 Ms)			Ms, SS
Reg. assembly removable	< DN 32 > DN 40	cartridge				valve seat		

Legend: Ms: brass SS: stainless steel Rg: gunmetal GG: grey cast iron Ho: Hostaform C CR: chloroprene rubber, NBR/Buna-N: nitrile rubber

drinking water



DN 15 up to DN 125
0.2... 2/20 bar

Dimensions				Flow rate	Kvs-	Nominal	Pressure		Order
A	B	C	D	recommended	value	size	inlet	outlet	number
mm	mm	mm	mm	(m³/h)*1	(m³/h)	DN	max. bar	bar	

Pressure regulator with flange						gunmetal, NBR/Buna N, w/o gauge drinking water: RWF-..C	RWF			
230	394	83	165	14	13	DN 50	16	0.2 ... 2	2	RWF-16A
324							25	0.5 ... 4	4	RWF-16B
324								1.5 ... 6	6	RWF-16C
396								1.5 ... 10	10	RWF-16E
384								1.5 ... 12	12	RWF-16F
411								2.0 ... 20	20	RWF-16G
290	420	93	185	24	20	DN 65	16	0.2 ... 2	2	RWF-20A
349							25	0.5 ... 4	4	RWF-20B
349								1.5 ... 6	6	RWF-20C
418								1.5 ... 10	10	RWF-20E
411								1.5 ... 12	12	RWF-20F
429								2.0 ... 20	20	RWF-20G
310	427	100	200	26	24	DN 80	16	0.2 ... 2	2	RWF-24A
	518	136		60	60			0.5 ... 4	4	RWF-24B
	356	100		26	24			1.5 ... 6	6	RWF-24C
	518	136		60	60			1.5 ... 6	6	RWF-25C
	521			60	60			3.0 ... 10	10	RWF-24E
	545			60	60		25	4.0 ... 12	12	RWF-24F
	436			24	24		25	2.0 ... 20	20	RWF-24G
350	540	140	200	80	80	DN 100	16	0.5 ... 4	4	RWF-32B
	540							1.5 ... 6	6	RWF-32C
	542							3.0 ... 10	10	RWF-32E
	600	135						4.0 ... 12	12	RWF-32F
400	730	165	270	130	130	DN 125	16	0.5 ... 4	4	RWF-40B
	540							1.5 ... 6	6	RWF-40C
	542							3.0 ... 10	10	RWF-40E



RWF-.. 24B/C/E
accessories: pressure gauge



RWF-..12...16F/G
accessories: pressure gauge



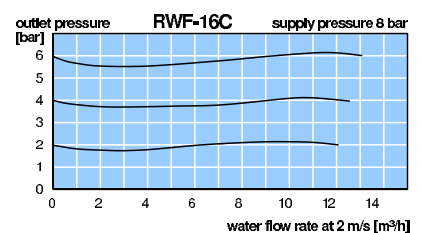
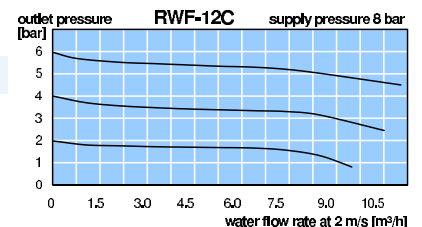
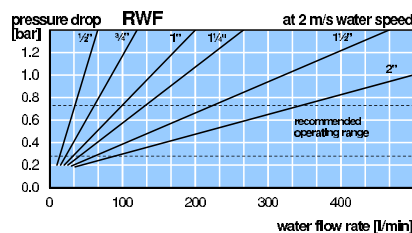
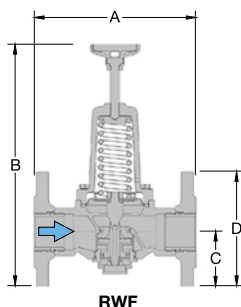
RWF-24F
accessories: pressure gauge

Special options, add the appropriate letter

Elastomer	EPDM: E	CR: C	FKM: V	RWF-.. .V
flange connection	ANSI			RWF-.. .F2
for different media	warm-, hot-, and see water, acids, bases, oil, petrol glue, food, foam, gases etc.			RWF-.. .X

Accessories, enclosed

pressure gauge Ø 63 mm, vertical 0...*2 bar, G1/4 MT6302-..*2



*1 at 2 m/s water speed * for compressed air the flow is 70 times greater
*2 02 = 0...2 bar, 04 = 0...4 bar, 06 = 0...6 bar, 10 = 0...10 bar, 16 = 0...16 bar, 25 = 0...25 bar

Gauges: see chapter for measuring devices

PDF CAD
www.aircom.net



Order example:
RWF-16A

Special



9